

SEPTEMBER 2015

House Beautiful

Perfect
COLORS
for every
room

SPECIAL
COLOR LOVER'S
ISSUE!





EVE GREEN 2024-20
BENJAMIN MOORE

"This wall was really asking for something. In the midst of a light, white room, the splash of chartreuse is very spicy and yet oddly neutral. It really sets off all the other colors around it, even the simple putty-white cabinets and the old sepia poster. It's a nice jolt of happy energy."

JACKIE TERRELL



HALF LIGHT 29-2
PRATT & LAMBERT

"The idea came to me after a surprisingly relaxing Virgin Atlantic flight from Los Angeles to London. The lighting in the plane was programmed to sync with the duration of the flight, and it varied through a cycle of warm, tranquil colors—including this lavender. The flight crew told me the lavender was specifically chosen to relax the mind."

CHAD EISNER



ST. LUCIA TEAL 683
BENJAMIN MOORE

"Sometimes designing for a couple can make you feel like you're a referee at a battle of the sexes. This teal appeals to both men and women, which made it perfect for an office that was going to be shared. It's robust but not too bold, and it would infuse any space with understated warmth."

KERRY JOYCE



HANCOCK GREEN HC-117
BENJAMIN MOORE

"This celadon is a little more serious than a lot of light greens. It's got a touch of gray, which gives it some depth. That makes it more earthy and sort of quiet, which is ideal for a work space. You get color and warmth, but it's not too much of a commitment. And it goes with everything, so it's a great backdrop."

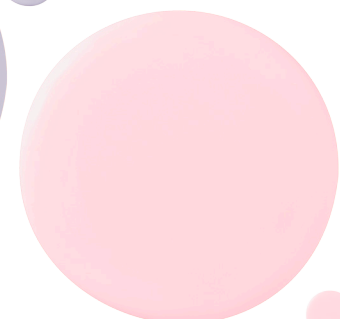
SALLY STEPONKUS



VIOLET DUSK 1409
BENJAMIN MOORE

"Working from home can be a real challenge. Just around the corner are all sorts of distractions, so a home office has to be both inviting and calm—a place where you can focus. I like this soft violet because it's barely there in the bright midday sun but gains richness as the light recedes over the course of the day."

MOLLY LUETKEMEYER



ANGELIC SW 6602
SHERWIN-WILLIAMS

"I used this delicate pink in my own home office, and I love it! It's feminine and flirty, but not too sweet because it leans slightly toward coral. Apparently pink has been shown to create calmness and peace of mind. Pair it with black and white for a counterpoint, or add deep emerald green to balance the softness of the pink."

TOBI FAIRLEY